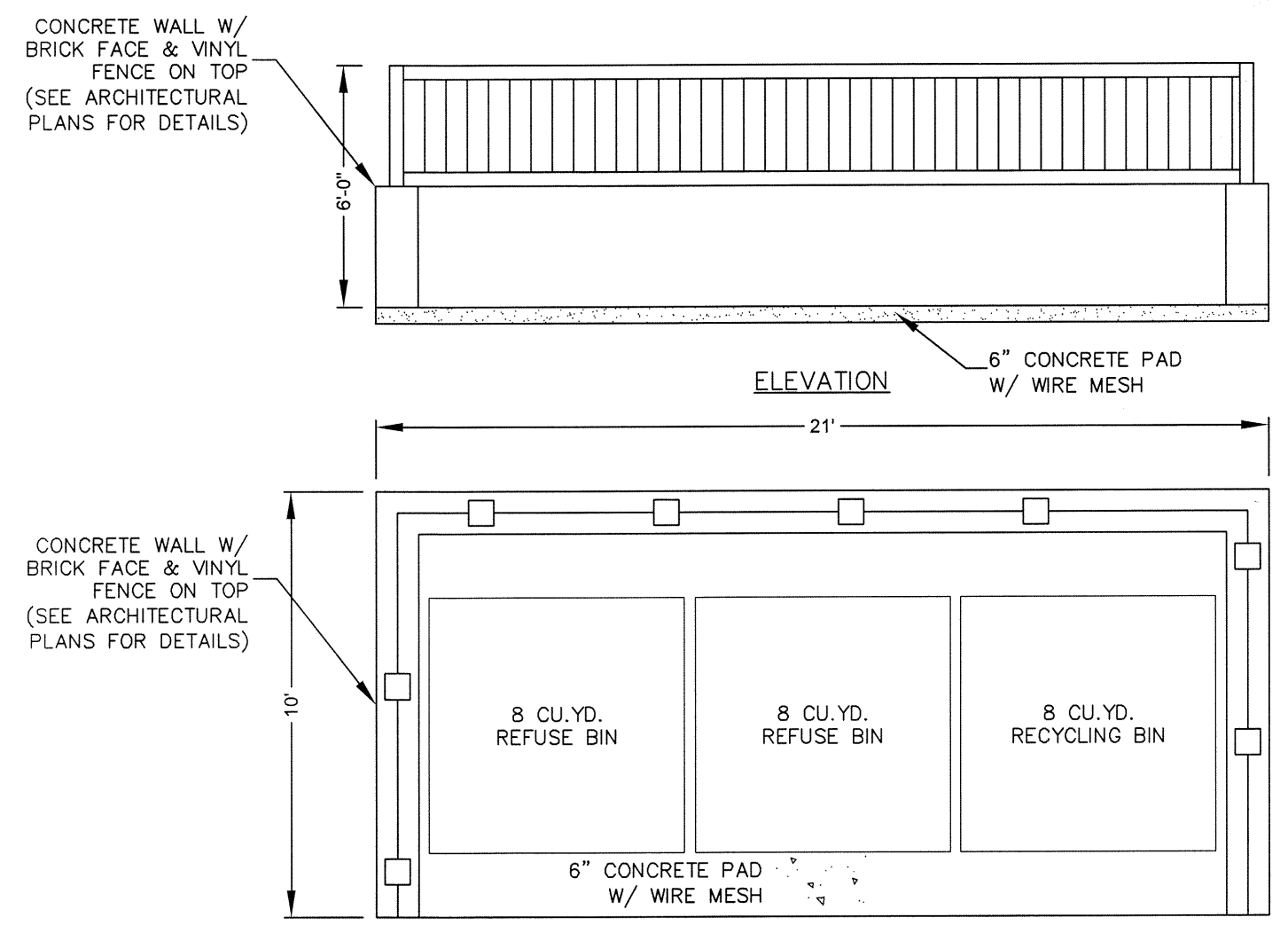
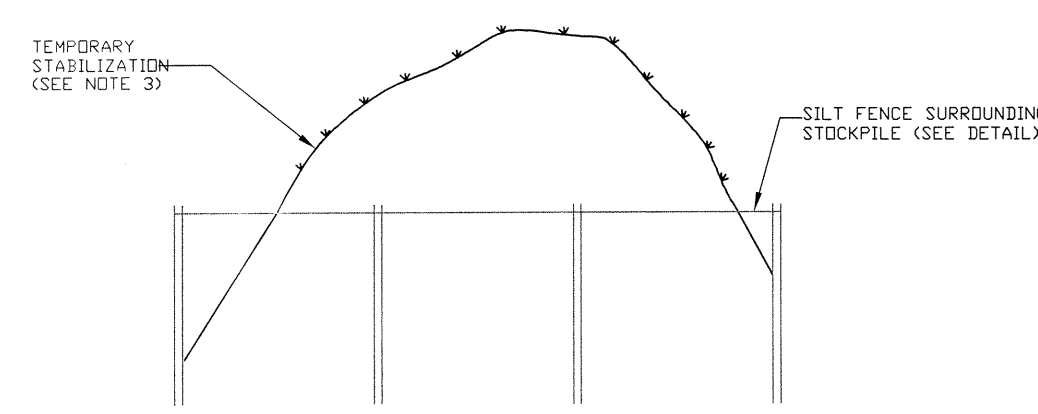


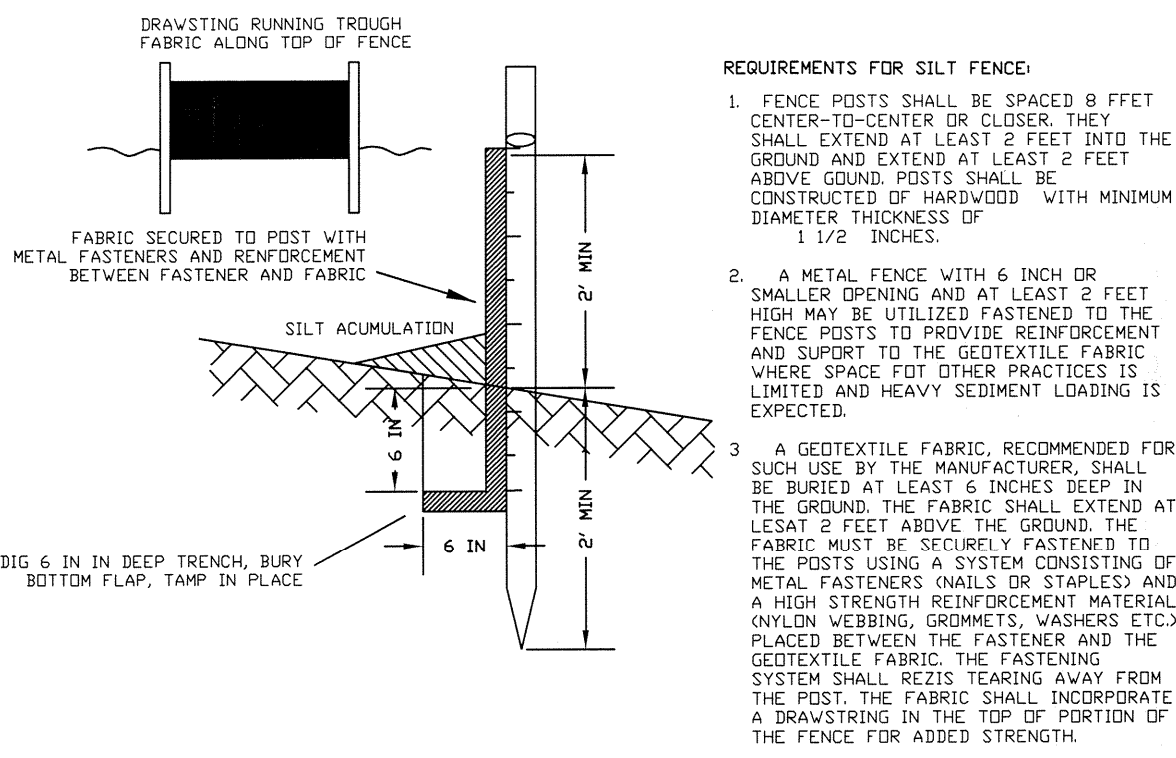
DUMPSTER ENCLOSURE



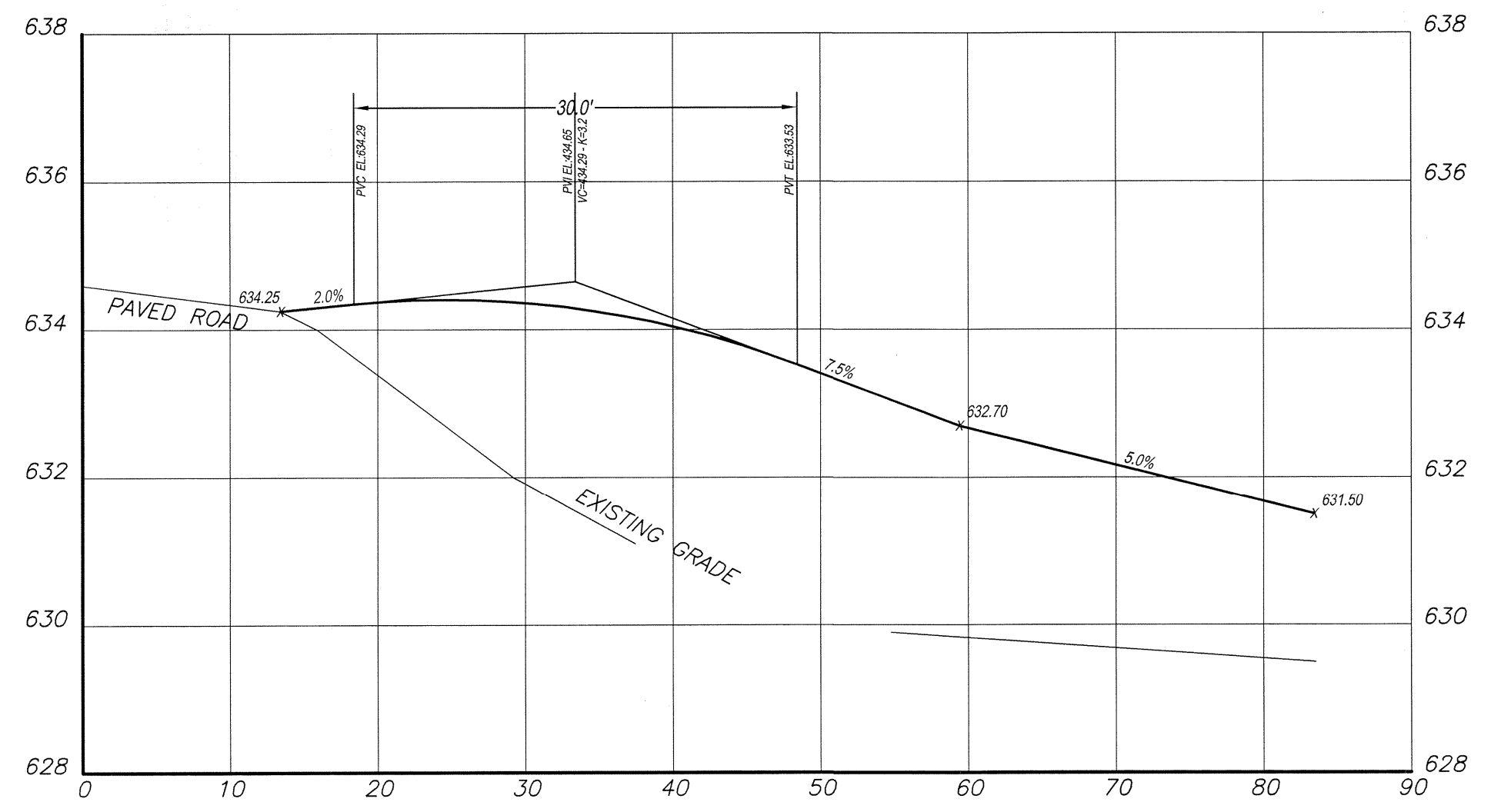
DUMPSTER ENCLOSURE



TOPSOIL STOCKPILE DETAIL

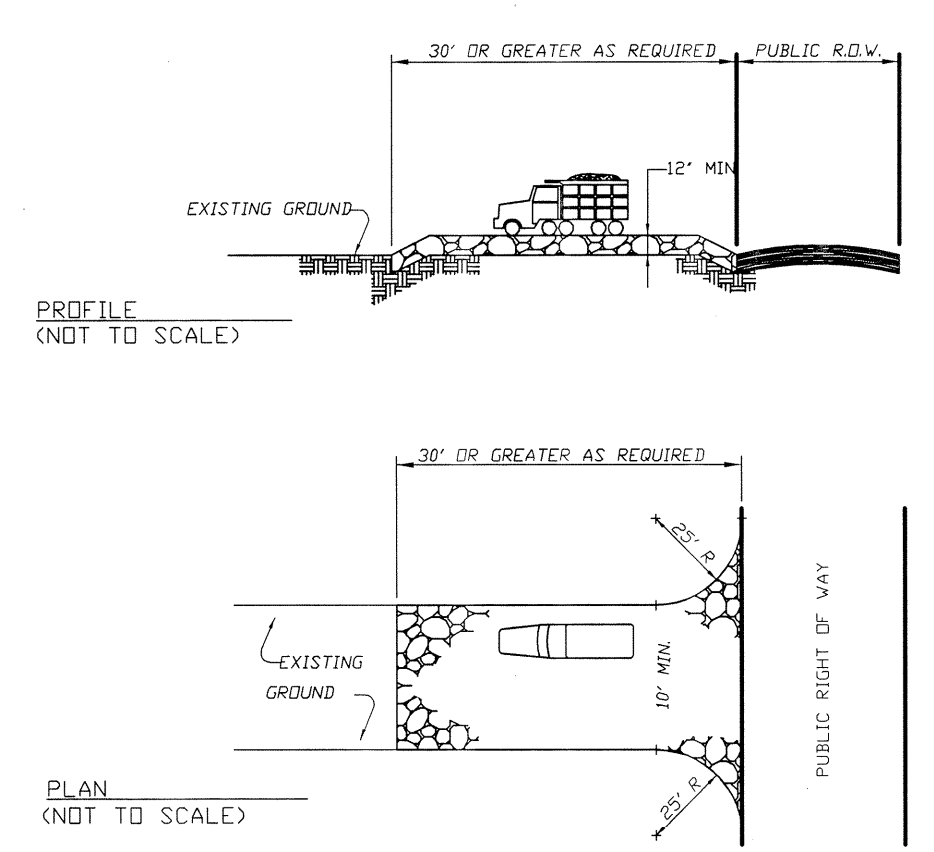


SILT FENCE CONSTRUCTION AND INSTALLATION DETAIL



DRIVEWAY PROFILE

SCALES: HOR. = 1"=10'  
VERT. = 1"=2'



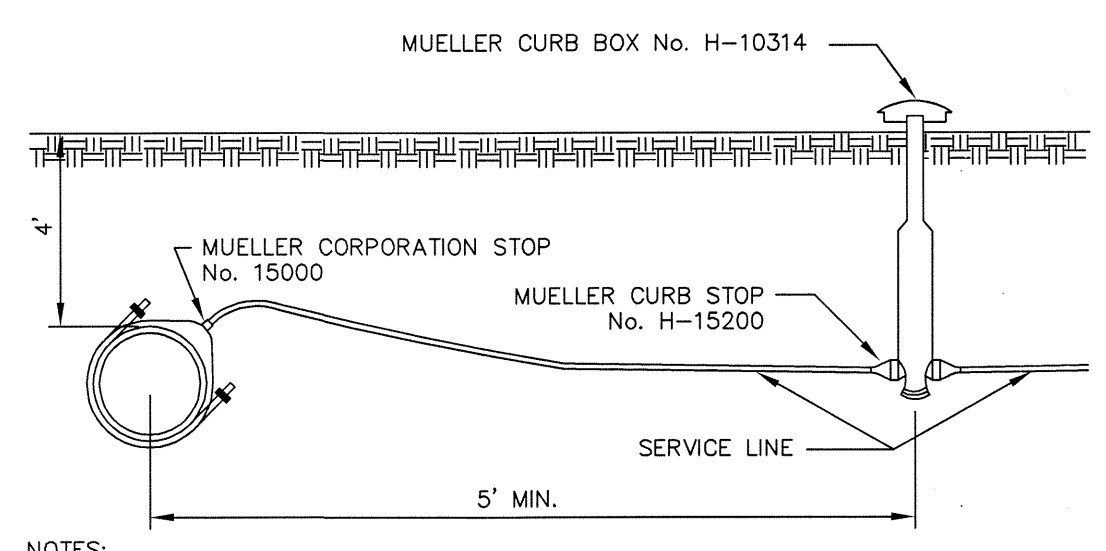
STABILIZED CONSTRUCTION ENTRANCE DETAIL

NOTES:  
1. PROVIDE APPROPRIATE TRANSITION BETWEEN STABILIZED CONSTRUCTION ENTRANCE AND PUBLIC R.O.W.  
2. STONE SIZE - USE ASTM C-33, SIZE NO. 2 OR 3. USE CRUSHED STD. 4151, STANDARDS FOR SOIL EROSION AND SEDIMENT CONTROL IN NEW JERSEY.

SEQUENCE OF CONSTRUCTION

- |  |          |
|--|----------|
| 1. INSTALL SOIL EROSION CONTROL MEASURES         | 1 DAY    |
| 2. CLEAR SITE                                    | 2 DAYS   |
| 3. ROUGH GRADING                                 | 1 WEEK   |
| 4. CONSTRUCT BUILDINGS                           | 24 WEEKS |
| 5. FINAL GRADING AND LANDSCAPING                 | 3 DAYS   |
| 6. RAKING, SEEDING & MULCHING                    | 2 DAYS   |
| 7. FINAL CLEAN-UP                                | 1 DAY    |
| 8. REMOVE REMAINING SOIL EROSION CONTROL DEVICES | 1 DAY    |

SEQUENCE OF CONSTRUCTION NOTES:  
1) SEQUENCE IS SUBJECT TO WEATHER, CONTRACTOR AVAILABILITY, MATERIAL AVAILABILITY AND OTHER EVENTS BEYOND THE CONTROL OF THE CONTRACTOR AND/OR OWNER.  
2) SOME ACTIVITIES CAN/WILL TAKE PLACE CONCURRENTLY.  
3) SILT FENCING SHALL REMAIN IN PLACE UNTIL PERMANENT VEGETATIVE COVER IS ESTABLISHED.  
4) IT IS ESTIMATED THAT THIS PROJECT WILL TAKE FROM 9 MONTHS TO 12 MONTHS TO COMPLETE.



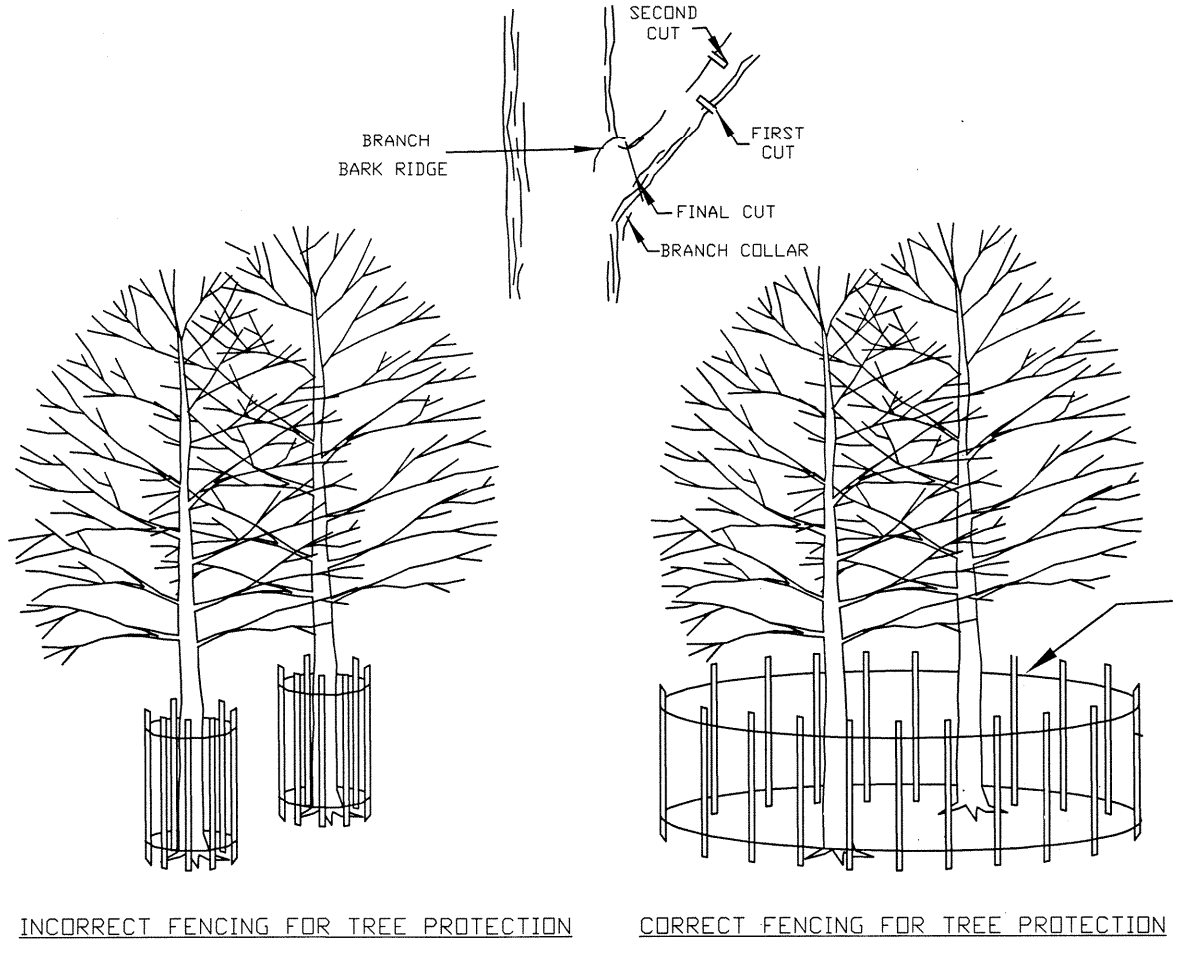
- NOTES:  
1. NEW TAPS LARGER THAN 1" INTO DUCTILE IRON CEMENT LINED OR CAST IRON CEMENT LINED WATER MAIN REQUIRE A SERVICE SADDLE WITH STAINLESS STEEL STRAPS.  
2. SERVICE PIPE SHALL BE BEDDED AND BACKFILLED WITH FINE GRANULAR MATERIAL TO PROTECT AGAINST IMPACT OR POINT LOADS BEARING DIRECTLY ON THE PIPE.  
3. BUILDING SERVICE CONNECTION PIPE SHALL BE TYPE 'K' COPPER OR POLYETHYLENE PRESSURE PIPE THAT COMPLIES WITH ANSI/AWWA C901 WITH A MINIMUM DIAMETER OF 3/4" AND 2" PIPE TO COMMUNITY BUILDING

TYPICAL WATER SERVICE INSTALLATION DETAIL

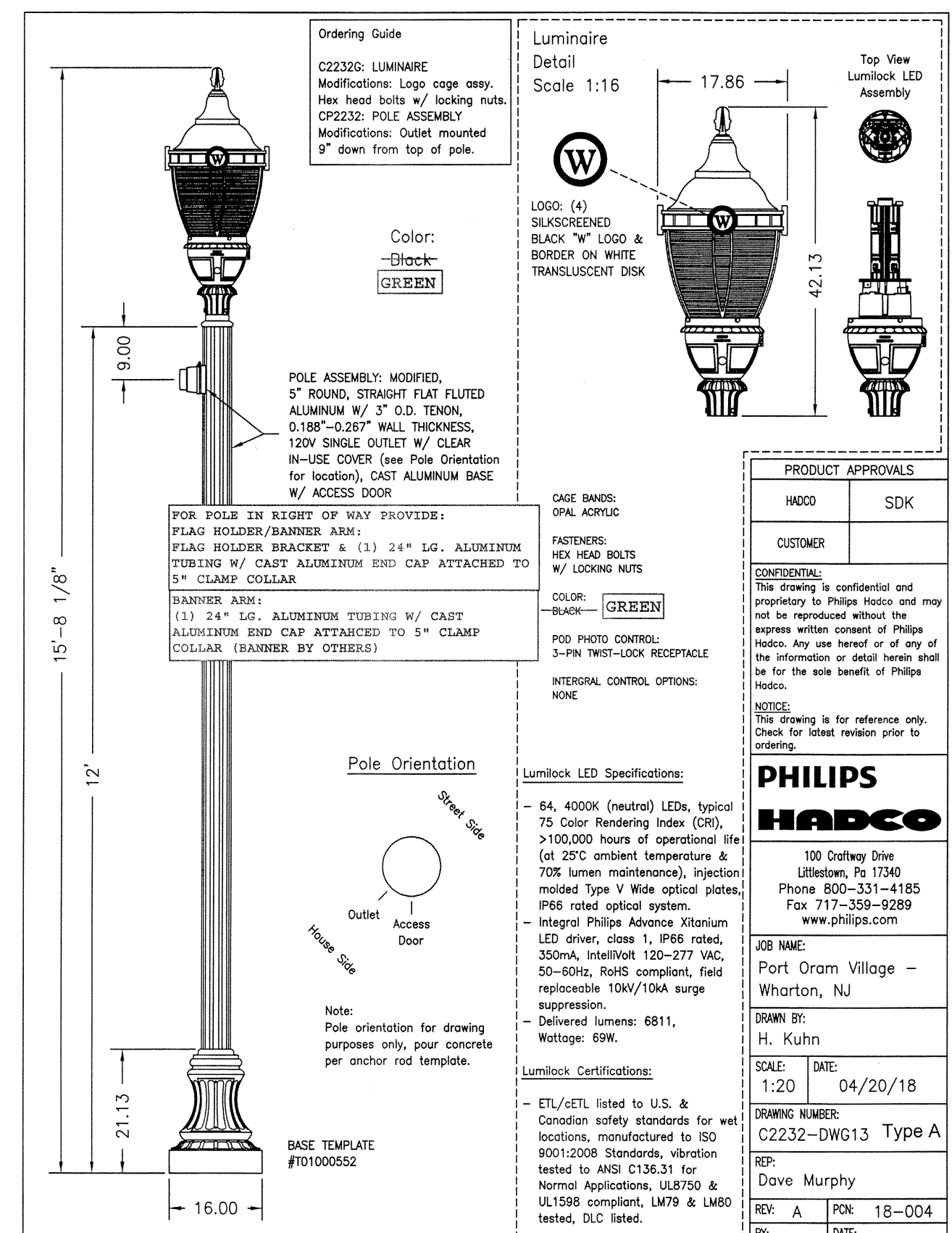
DUST CONTROL MATERIALS

MATERIAL	WATER DILUTION	TYPE OF NOZZLE	GALLON/ACRE
Anionic asphalt emulsion	7:1	Coarse Spray	1200
Latex emulsion	12.5:1	Fine Spray	235
Resin in water	4:1	Fine Spray	300
Polyacrylamide (PAM) (dry spread)		Apply according to manufacturer's instructions. May also be used as an additive to sediment basins to flocculate and precipitate suspended solids. (See Sediment Basin Standards, p. 25.)	
Polyacrylamide (PAM) (dry spread)			
Activated Soy Bean Soup Stick	None	Coarse Spray	1200

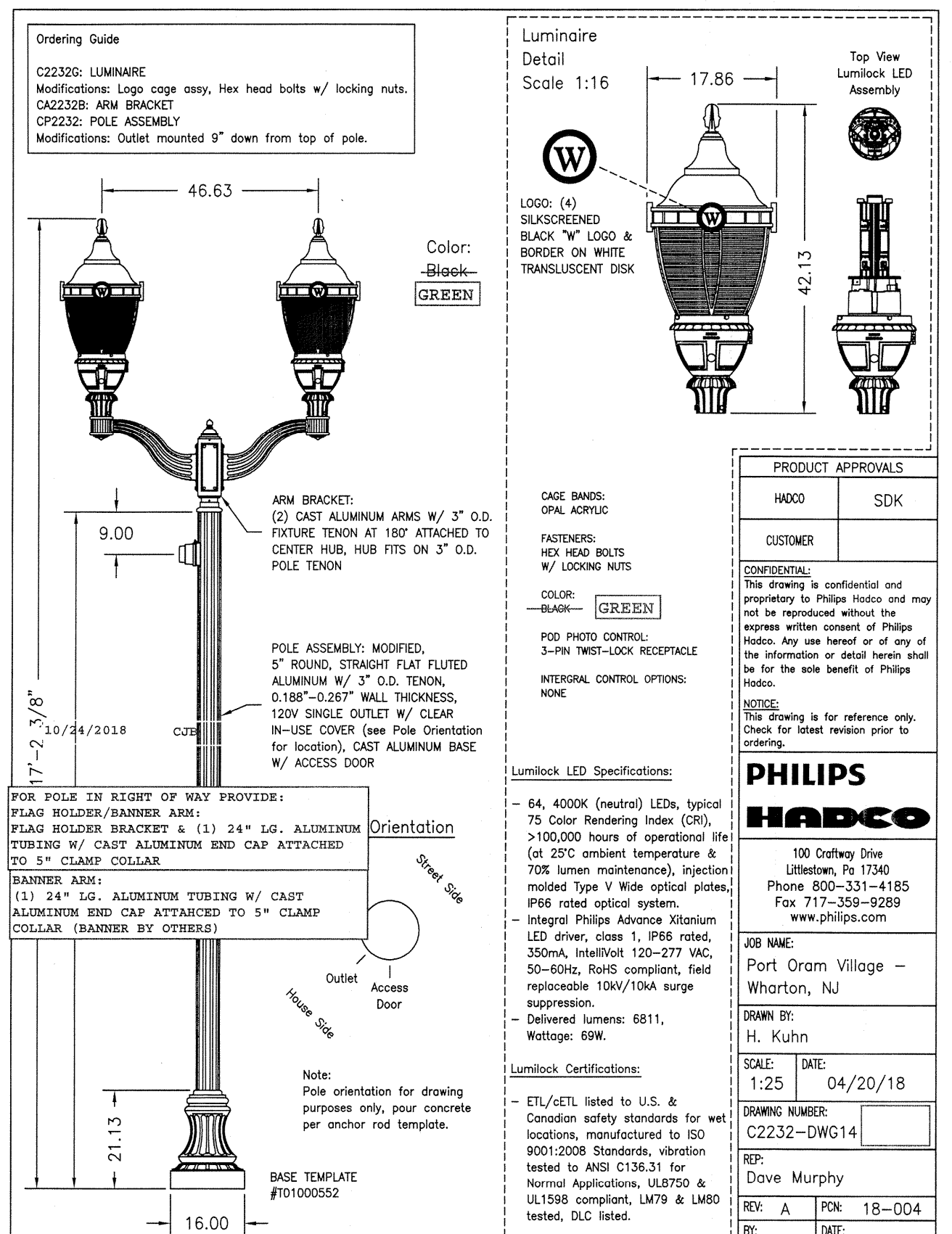
**Tillage:** To roughen surface and bring clods to the surface. This is a temporary emergency measure which should be used before soil blowing starts. Begin plowing on windward side of site. Chisel-type plow placed about 12 inches apart, and spring toothed harrows are examples of equipment which may produce the desired effect.  
**Seeding:** Site is seeded until the surface is wet.  
**Barriers:** Solid board fences, snow fences, burlap fences, crate walls, piles of hay, and similar materials can be used to control air currents and soil blowing.  
**Calcium Chloride:** Shall be in the form of loose, dry granules or flakes fine enough to feed through commonly used spreaders at a rate that will keep surface moist but not cause pollution of plant damage. It used on steeper slopes, then use other practices to prevent washing into streams, or accumulation around plants.  
**Stops:** Cover surface with crushed stone or coarse gravel.



TREE PROTECTION DETAIL



ONSITE POLE MOUNTED LIGHT DETAIL



STREETSCAPE LIGHT DETAIL

1	11-25-2020	PER MUNICIPAL & COUNTY COMMENTS	G.B.S.
REV.	DATE	DESCRIPTION	BY
<b>CONSTRUCTION DETAILS FOR 170 NORTH MAIN STREET LOT 1 BLOCK 301</b>			
BOROUGH OF WHARTON, MORRIS COUNTY, N.J.			
<b>ALFRED A. STEWART, JR.</b>		<b>STEWART SURVEYING &amp; ENGINEERING, LLC</b>	
148 EAST MAIN STREET SUITE 13 ROCKAWAY, N.J. 07866		PHONE: 973-586-3736 FAX: 973-586-3739 SIRVEYOR@VERIZON.NET	
NJ PROFESSIONAL ENGINEER & LAND SURVEYOR, LIC. NO. 24GB03588300		DRAWN BY: G.B.S. SCALE: 1"=30' FILE No. 17-113 DWG 17113.DWG	

LAYOUT: DETAILS